



# U.S. INTERNATIONAL CHRISTIAN ACADEMY

Serving students since 2001  
**Owned and Operated by Teachers**  
with 25 years of experience in Teaching and Administration

[www.usicahs.org](http://www.usicahs.org)

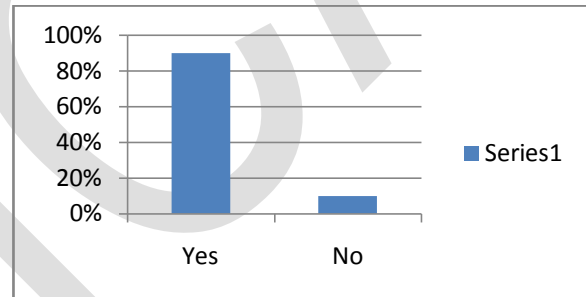
e.mail: [admin@USICAHS.ORG](mailto:admin@USICAHS.ORG)



## Teacher Survey

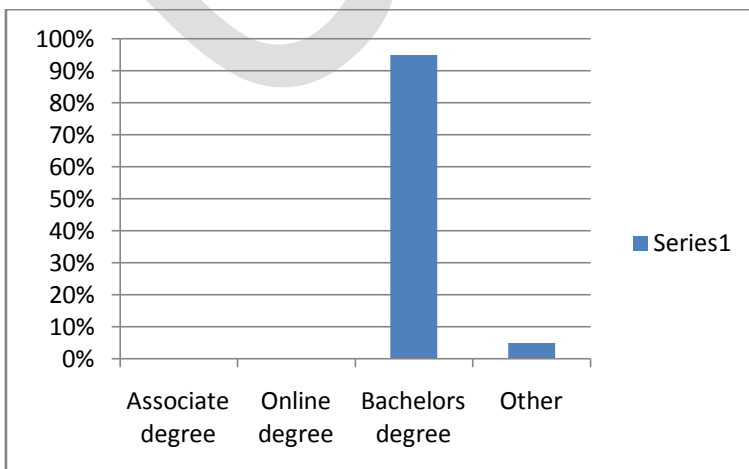
**1. Are you employed with any other school/institute other than this school?**

- 1. Yes
- 2. No



**2. Please state your highest academic qualification?**

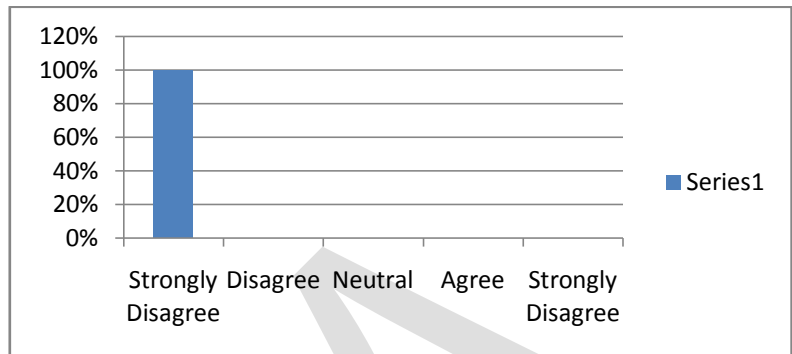
- 1. Associate degree
- 2. Online degree
- 3. Bachelors degree
- 4. Others (Please specify)



Please state your level of agreement for the following statements:

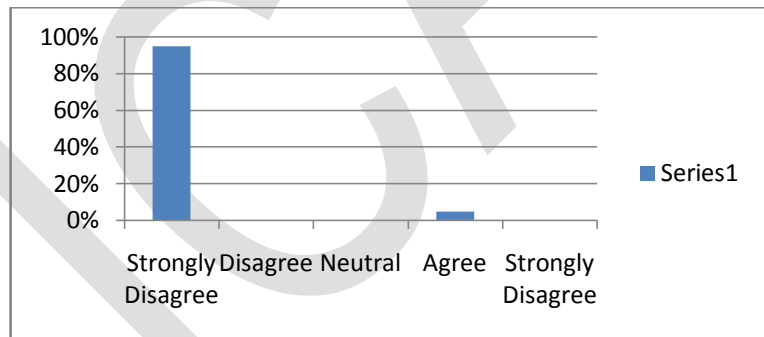
**3. Most of the schooling staff in the institute have a unified vision**

- 1.Strongly disagree
- 2.Disagree
- 3.Neutral
- 4.Agree
- 5.Strongly disagree



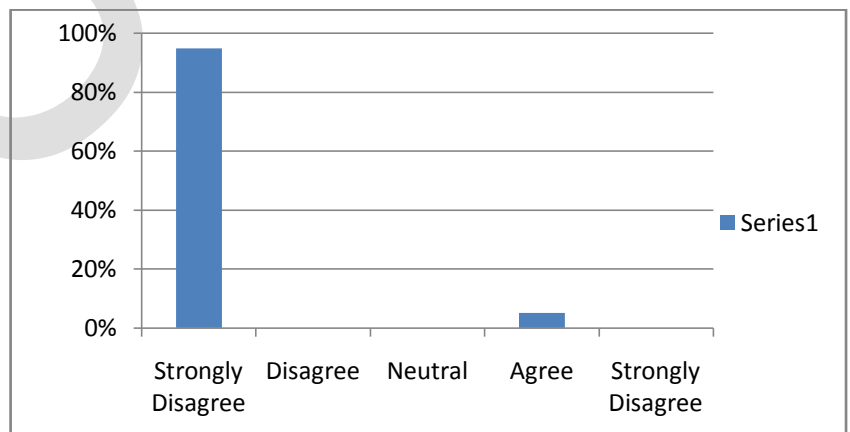
**4.The school staff is caring and respects the students**

- 1.Strongly disagree
- 2.Disagree
- 3.Neutral
- 4.Agree
- 5.Strongly disagree



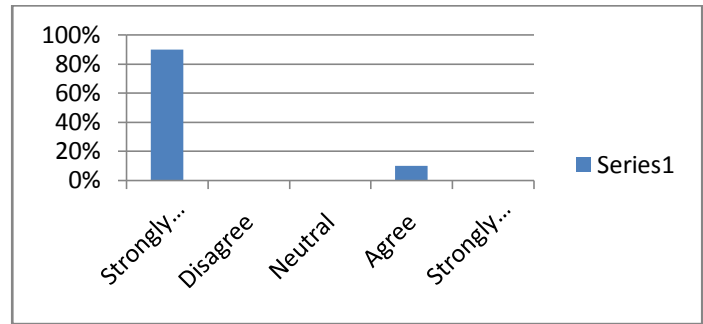
**5. The school staff treats each with respect**

- 1.Strongly disagree
- 2.Disagree
- 3.Neutral
- 4.Agree
- 5.Strongly disagree



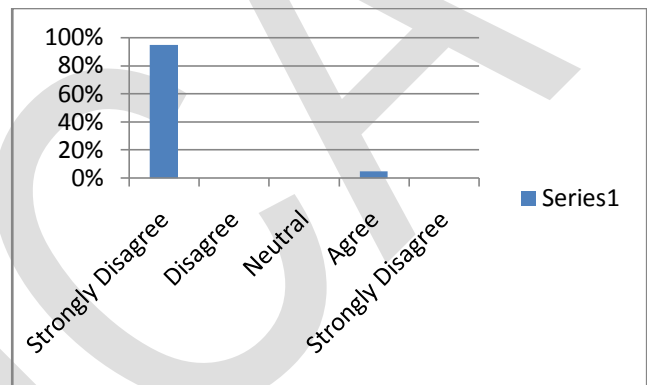
**6.The staff and students are committed to school values**

- 1.Strongly disagree
- 2.Disagree
- 3.Neutral
- 4.Agree
- 5.Strongly disagree



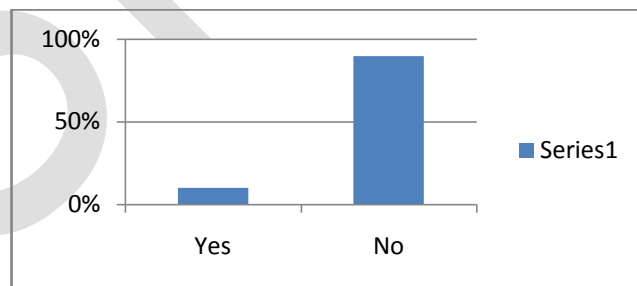
**7.The school staff has good knowledge in their areas of teaching**

- 1.Strongly disagree
- 2.Disagree
- 3.Neutral
- 4.Agree
- 5.Strongly disagree



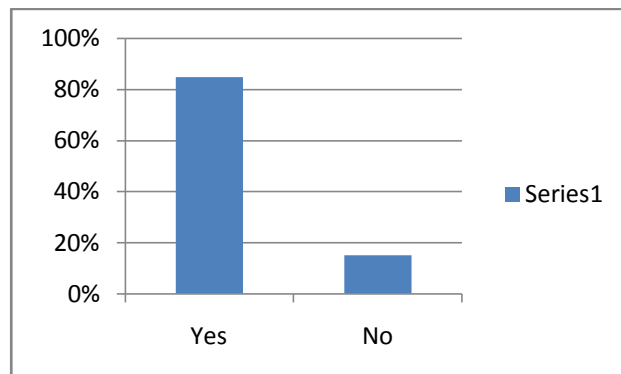
**8.Did you have to pay for yourself for any professional development activities?**

- 1.Yes
- 2.No



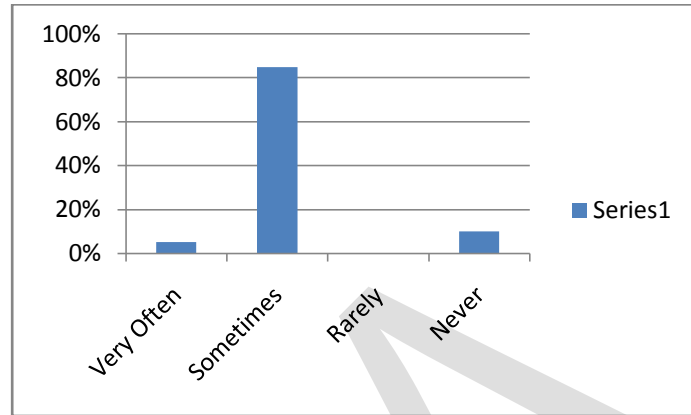
**9.Did professional development activities have a positive impact on your career growth at the institute/school?**

- 1.Yes
- 2.No



10. How often were you consulted before finalizing the curriculum for the students?

- 1. Very often
- 2. Sometimes
- 3. Rarely
- 4. Never



US SICAF